



M/V "Norrvik"

Main particulars:

Name: M/V "Norrvik"
Type: Dry cargo
Call sign: ZQJA8
IMO nr.: 7711907
Bowtruster: Yes
Flag: Isle of Man
Home port: Douglas
Built: 1979
Class: Germanisher Lloyd
Ice Class: 1C
P&I: British Marine

Measurements:

Gross tonnage: 2050
Net tonnage: 1050
Dead weight: 3254
DWCC Summer: 3080
DWCC Winter: 2950

Dimensions:

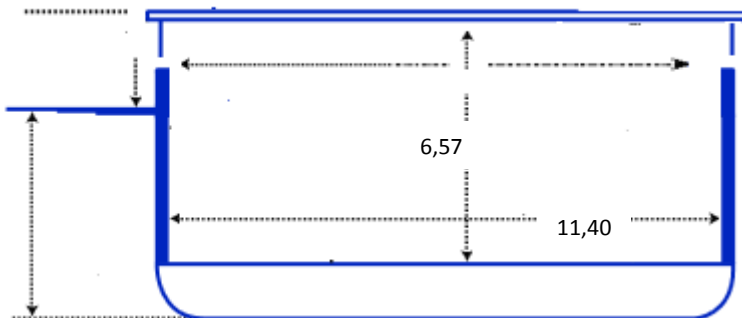
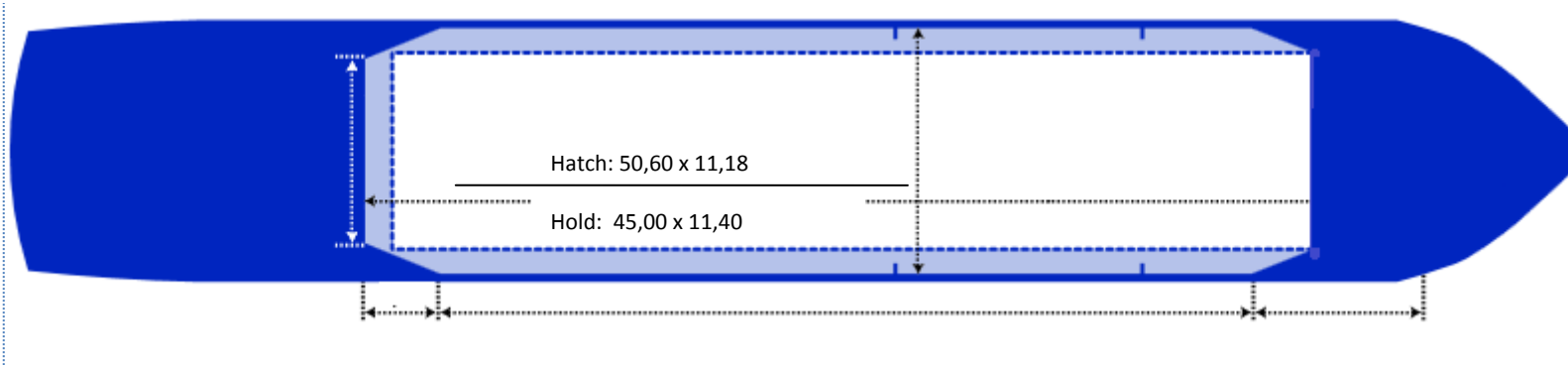
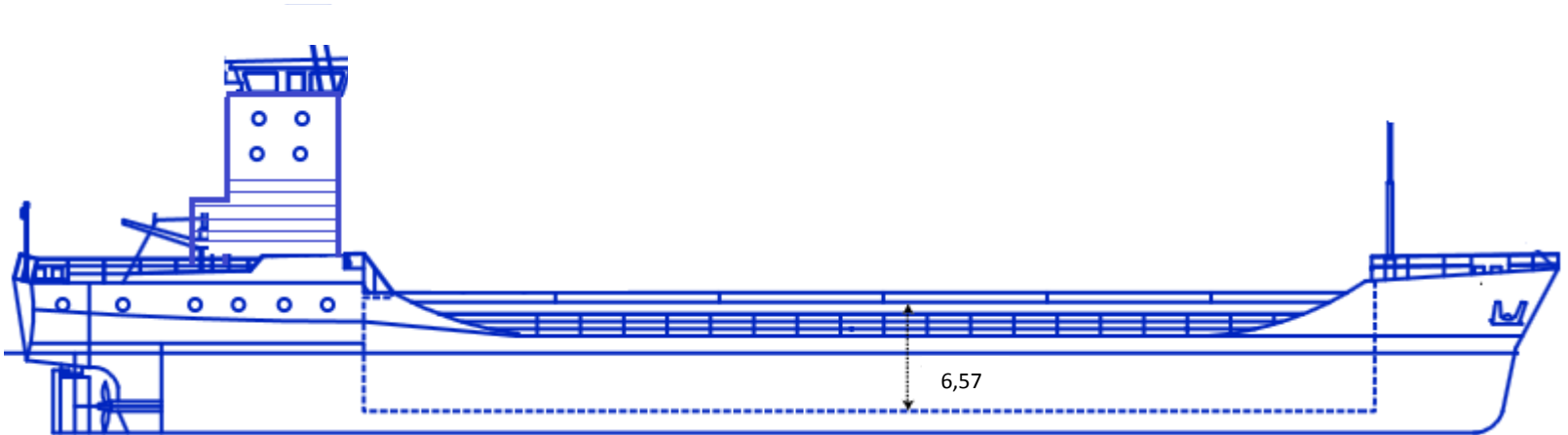
LOA: 80,30
Beam: 13,80
Draft: 6,55
Deck cargo height: 5,0 m

Cargo hold:

Grain: 132.500 cbft
Bale: 130.000 cbft
Bulkheads: 0 pcs
Tank top: 6,5 / m2
Hatch: 2,5 / m2
Intake 20': 136 TEU

Ship contact details:

Phone: +49 15201528672
E-mail:
company.norrvik@telarus.com



M/V "Norrvik"



M/V "Norrvik" loading STS operation in Stade



M/V "Norrvik" carrying project cargo from Hamburg to Kalundborg via Kiel



M/V "Norrvik" loading rapeseeds in Hundested for Hamburg



M/V "Norrvik" discharging oats